

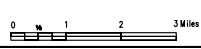
- 27/40-15D1
HYDROGRAPH WELL
- STREAM RECORDING
STATION (KCWA)

CONTOUR INTERVAL=10'
DASHED CONTOUR LINES INDICATE ESTIMATED VALUES



Kern County Water Agency
Kern County, California

INDIAN WELLS VALLEY GROUNDWATER SURFACE ELEVATION SPRING 1997



(based on NIMA Survey Data)